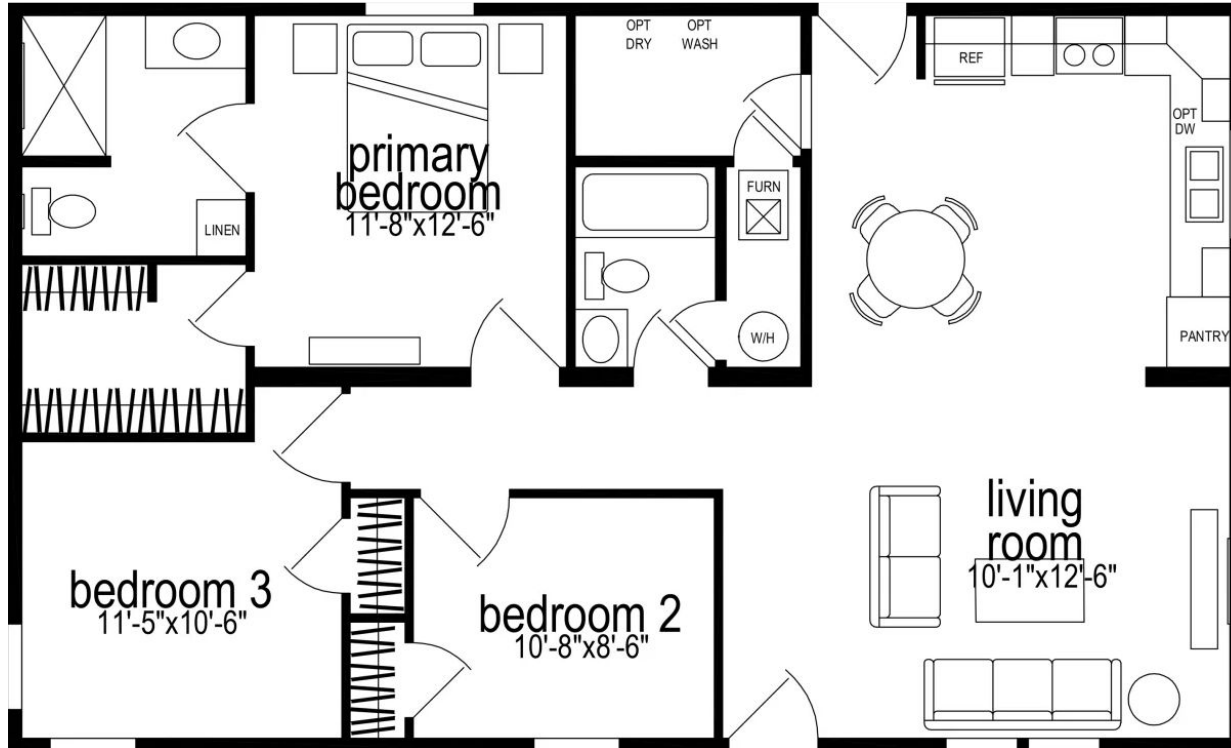


Prairie Dune 8810

3 BEDS 2 BATHS 1,144 SQ. FT 26' 8" x 44'



The Prairie Dune 8810 from the Prairie Dune Series offers 1,144 sq. ft. of living space with 3 bedrooms and 2 bathrooms.



Colorado Home Sales

build.yourbesthomeprice.com/homes/sky-line-arkansas-city-prairie-prairie-dune-8810



Prairie Dune 8810

3 BEDS 2 BATHS 1,144 SQ. FT 26' 8" x 44'

Standard Features

Prairie Dune | Skyline Arkansas City

Construction

- 8' Sidewall Height
- Continuous Plywood Marriage Line Beam
- Flat Ceilings Throughout
- 2x4 Exterior Walls
- 2x3 Interior Walls
- 3/12 Roof Pitch
- 30# Roof Load
- 2x6 Joists on 28' Wide
- 2x8 Joists on 32' Wide
- Detachable Hitch
- Recessed Frame
- Thermal Zone II
- Insulation R 19-11-11

Exterior

- Vinyl Siding with House Wrap
- Red Barricade® Sheathing on Sides and Ends—OSB Upgrade Available
- 25-Year Roof, 3-Tab Shingles
- 36" 4-Light Fiberglass Front Door
- 36" 6-Panel Fiberglass Rear Door
- Single-Hung Low-E Windows
- 8' Dormer Over Door (E-284-A)

Interior

- Congoleum® Linoleum Throughout
- Mini Blinds Available for Upgrade
- VOG Standard
- 3" Craftsman Molding and Trim Throughout

Kitchen

- CS90 Cabinet Construction
- Flat Panel Cabinet Doors
- Hardwood Cabinet Styles
- Roller Drawer Guides
- Single 3" Style Cabinet Molding
- Shelf in Base Cabinet
- Self-Edge HPL Countertop
- 1-Row Ceramic Backsplash
- 8" Double Bowl Sink - Stainless Steel
- Single-Lever Kitchen Faucet
- 18 Cu. Ft. Refrigerator
- 30" Black Electric Range
- Lighted Range Hood



Colorado Home Sales
build.yourbesthomeprice.com/homes/skyline-arkansas-city-prairie-prairie-dune-8810



Prairie Dune 8810

3 BEDS 2 BATHS 1,144 SQ. FT 26' 8" x 44'

Standard Features

Prairie Dune | Skyline Arkansas City

Bathroom

- Flat Panel Cabinet Doors
- Hardwood Cabinet Styles
- 1-Piece Fiberglass Tub/Showers
- Self-Edge HPL Countertop
- China Lavatory Bowls
- Dual-Handle Lavatory Faucets
- Elongated China Commodes
- Power Vent Fan with Light
- Ceramic Backsplash at Counter

Mechanical

- Electric Furnace
- Full Perimeter Heat Duct
- 40-Gallon Electric Water Heater
- Plumb for Washer
- Wire for Dryer
- Wire Shelving above Washer and Dryer
- 200 AMP Service
- LED Throughout (Except Pendants and Ceiling Fans)
- (1) Exterior GFCI Receptacle
- Whole House Water Shut-Off
- Water Shut-Offs All Fixtures
- DWV and Water Supply Plumbed into Drop(s)



Colorado Home Sales

build.yourbesthomeprice.com/homes/skyline-arkansas-city-prairie-prairie-dune-8810

